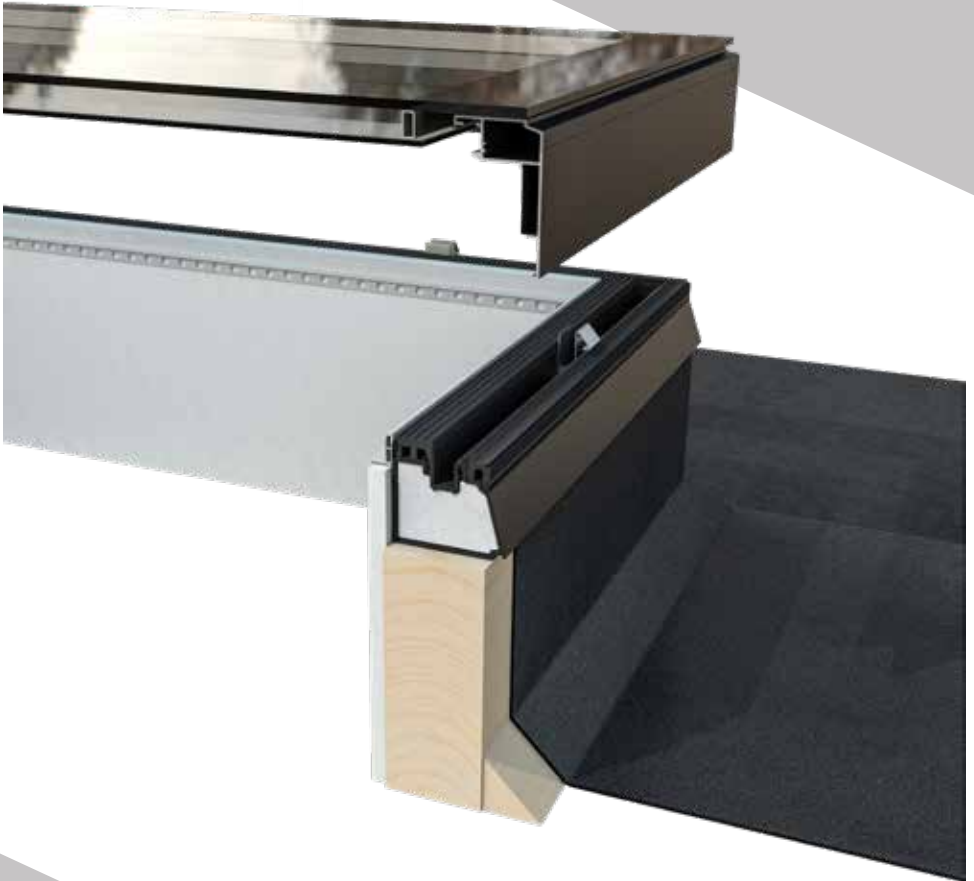




WENDLAND

R O O F S O L U T I O N S



Installation Guide

Wendland Flat Skylight

V2 | June 2022

Thank you for choosing the Wendland Flat Skylight product. This guide is designed to make fitting as straight forward as possible.

This guide is written on the basis that the surveyor has undertaken correct checks for the capability / structural performance of any existing flat roof to verify it is fit for purpose. A timber kerb and weatherproofing materials for the deck/kerb interface are not provided.

Any feedback - positive or negative - is welcome so we can make our systems even better.

Please contact the Tech Support Team on 01200 452 318 or email customerservice@wendland.uk.com

IMPORTANT NOTES

- Take care when opening package.
- Always wear appropriate PPE when handling glass; Cut level 5 gloves, cut resistant sleeves, eye protection.
- Ensure the skylight is fitted in the correct sequence and orientation.
- Check that the up stand is square by measuring diagonals.
- Larger units will require multiple persons to lift.
- Not suitable to walk on the glass.
- Inner panes must be laminated in applications more than 5 metres above floor level*
- All sizes of the flat skylight exceeds building regulations. Please refer to the Thermal Design Guide in Udesign for a confirmed U-value of each product.

The Flat Skylight product is designed to meet the current British Standards for overhead glass installed less than 5m above the finished floor level, however is not designed to be walked on. The Standards state that inner panes on overhead glass units must be laminated in applications more than 5 metres above floor level (which is increased to 13 metres in limited circumstances) or are located over a body of water (such as swimming pools). However, the use of toughened inner glass panes in other applications below 5m above the finished floor level is permitted in the standard, although a risk assessment should be carried out and confirmation provided that this does not present additional risk to those below the rooflight.

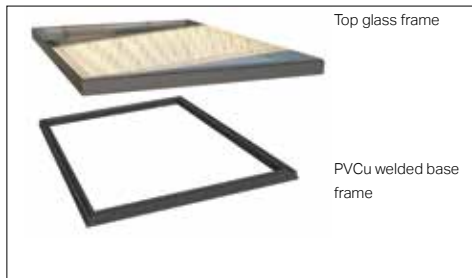
ASSEMBLIES & PARTS INCLUDED



Clip (FRICB001M)



Plasterboard trim (LVCT)



Top glass frame

PVCu welded base frame

Screws supplied



100mm (FRFC008-100)

Surplus fasteners may be supplied in some instances but do not require fitting.

TOOLS REQUIRED



Drill/ Screwdriver

Tape Measure

Spirit Level

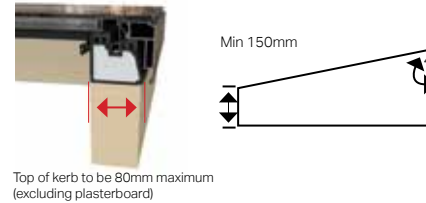
Stanley Knife

Sealant Gun

5mm Drill Bit

KERB INSTALLATION

Kerb construction rules



Top of kerb to be 80mm maximum (excluding plasterboard)



Construct the up stand to flat roof and fit roof covering.

NOTE: Measure diagonal corners to check sizes

80mm maximum size at the top of the kerb to ensure that the aluminium frame does not foul and prevent it from clipping into place. To comply with Building Regulations, the kerb may be wider than this to fit more insulation, We would recommend chamfering/stepping the top edge of the kerb, so that the width at the top is 80mm.



ROOF COVERINGS KERB

Guidance only, always consult your roof covering supplier prior to fitting.

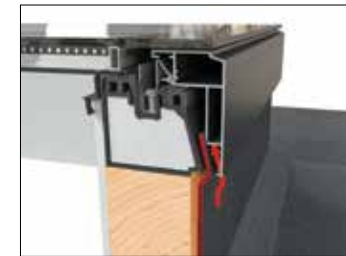
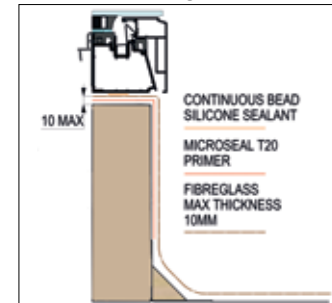
Membrane:

Option 1 Lap membrane over the top of the kerb ensuring that a watertight finish is achieved.

Option 2 Wrap the membrane up to the top face of the kerb, knife flush and fix using sealant/adhesive - ensuring that a watertight finish is achieved.

Post Skylight Installation: Roof coverings can be applied before or after the skylight is installed. When applying roof covering after the skylight it must be wedged behind the aluminum frame.

Fibreglass



FLAT SKYLIGHT INSTALLATION

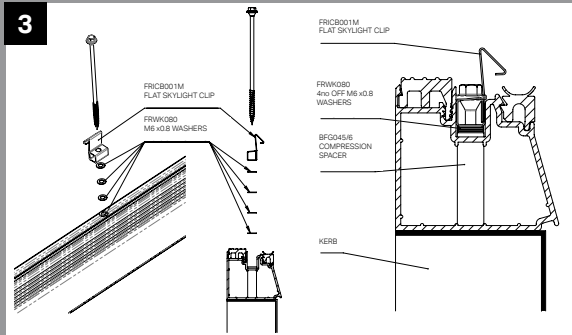


Apply a generous, continuous bead of silicone to the top surface of the kerb as shown.



Position PVCu welded base frame and align with internal kerb face.

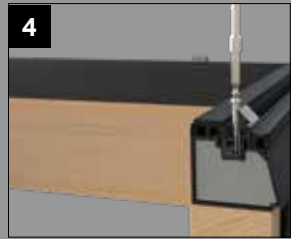
FLAT SKYLIGHT INSTALLATION



Note: Washers are supplied only when installing a flat skylight with 6-16-6 glazing

Ensure that 4 washers (FRWVA080) are installed below all flat skylight clips (fricb001m). This lifts the clip position for optimal engagement. Each clip will require 4 washers. Please note- FRWK080 includes 80 washers, surplus washers are to be expected.

*Before fitting all the clips, please look at the section below about fitting the washers.

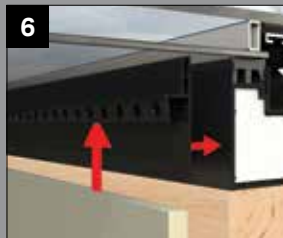


Firstly check that all aluminium spacer sleeves are in place in the fixing holes. Ensure you use all the clips provided. Position clips (FRICB001M) into location holes and fix using the provided (FRFC008-100) 100mm long screw.



Fit the top glass frame onto the PVCu frame. Carefully lower into position and then apply downwards pressure to opposite sides to activate clips (You will hear a click).

NOTE: Larger units will require multiple persons to lift.



Plasterboard trim fitting - **OPTION ONE** - Fit to edge of plasterboard and then fix plasterboard appropriately

OPTION TWO - Position as shown and then fix; using a countersunk screw and adhesive (not supplied) and then fit plasterboard.

NOTE: Top edge to be flush with internal glass.



INSTALLATION IS COMPLETE



WENDLAND

ROOF SOLUTIONS

www.wendland.uk.com

© Wendland - Our policy is one of continuous improvement and we reserve the right to change specification and design at any time without prior notice.

Job No.7075 Wendland Flat Skylight V2 06/22