

GUTTER COVER INSTALLATION

Ensure the eaves beam, glazing bars, ridge/wallplate are already installed



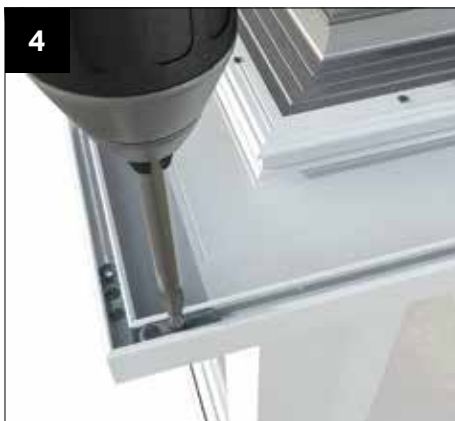
1
Decide the position of the gutter outlet by lining the extrusion 'v' groove up with the centre of the hole for the down pipe. Using a 73mm dia hole saw, cut the hole for the down pipe in the lower section.



2
Remove the under gutter trim and dispose of it. Prior to fitting gutter offer up the lower section then secure into position using the fixings provided (CRN007). **Please note: Always start with the front facet!**



3
Fit the cleats (CRN001) to the desired side using the fixings provided (CRN006) as shown and assemble the remaining lower sections.



4
Secure each corner using the cleats (CRN001) and fixings provided (CRN006).

The gutter and glazing should now be fitted (see main guide). Check integrity of all gutter joints before proceeding further.



5
Offer up the middle section into position, (it may be advisable to temporarily support the lower section whilst fixing) secure using fixings provided (CRN007). (Long reach driver required).



6
Fit cleats as shown in step 3. Offer up the next middle section. Continue to support lower section as shown in step 5.



7
As shown in step 5 it may be advisable to temporarily support the assembly whilst fixing. Secure corners using the cleats (CRN001) and fixings provided (CRN006).

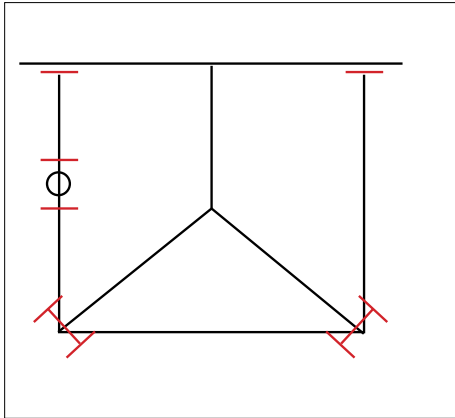


8
Clip fit the support brackets (CRN002), adjacent to every gutter bracket.

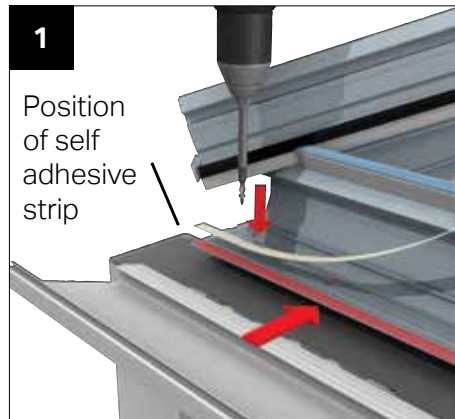


ADDITIONAL STEPS

Ensure the eaves beam, glazing bars, ridge/wallplate are already installed



'H' or '-' shows position of DAMS.



1 Remove under gutter trim, attach self adhesive strip to 'toe' of eaves beam.



2 Silicone seal front and back edge of lower sections (be generous). Similarly butter 'DAM' sealer - position within 50mm of any stop end or outlet.



3 Take 'rubberized' sealer strips and generously butter with silicone.



4 At 90° corner insert 'H' section and press down. Similarly apply at stop end or outlet positions.

GUTTER COVER INSTALLATION - TOP SECTION

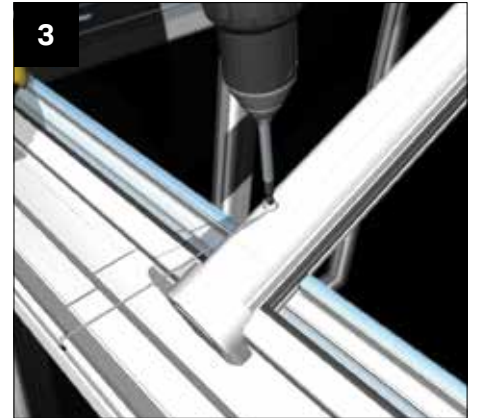
Ensure the eaves beam, glazing bars, ridge/wallplate are already installed



1
Temporarily support and fit the upper section, using the fixings provided (CRN007).



2
Secure the corners using the cleat (CRN001) and fixings (CRN006).



3
Secure the upper section using the wire ties at each glazing bar. Hook the wire tie into the pre-drilled hole in the upper section and screw fix into the glazing bar, ensuring the upper section remains parallel to the frames/roof line.

GUTTER COVER INSTALLATION - CORNER SECTIONS

90° Corner (no columns)

CRN090

90° Corner (small columns)

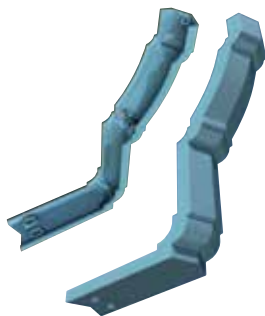
LRP022

90° Corner
(large columns)

LRP021

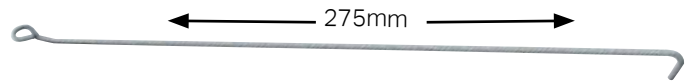
135° Corner (no columns)

CRN135



Long Corner Wire Tie

CRN012



Fixing Screw

CRN010 (Wire tie to hip bar)

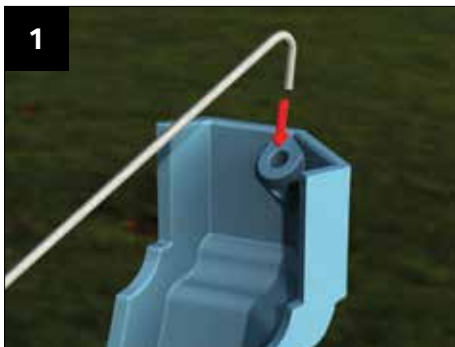


Fixing Screw

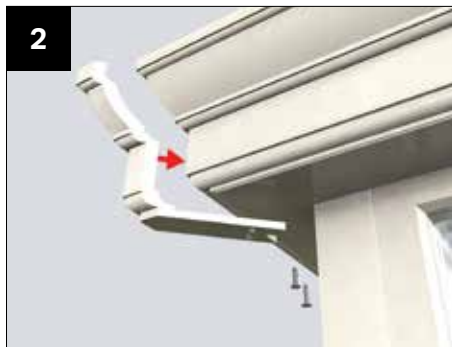
CRN007 (2 per corner)



Please note that it is not compulsory to fit the corners. If a crisp sharp mitre is required the corners need not be fitted, provided due care has been taken during installation. If on the other hand the 'look' of the cast corner is preferred follow the instructions above for each relevant corner. Corners will be supplied for the 135° & 90° external corners.



1
Prior to fitting the corner insert the special longer wire tie CRN012, into the corner as indicated

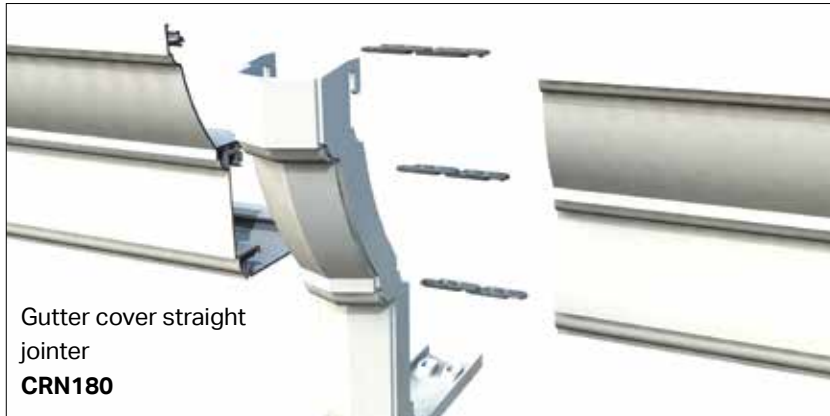


2
Whilst ensuring that the corner remains located in position, screw fix using self drilling screws CRN007



3
Finally secure the corner by screw fixing the wire tie to the glazing bar using self drilling screw CRN010

CURVED INLINE INSTALLATION - JOINTER SECTIONS



Cleat
Fixing Screw
CRN006
(2 per jointer)



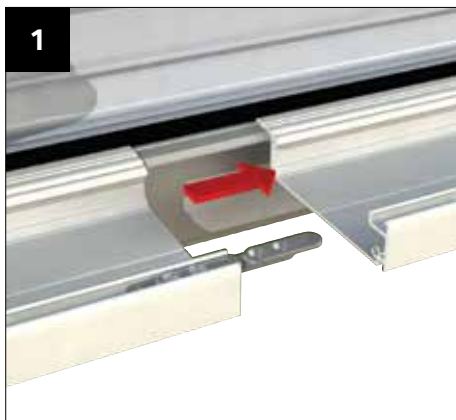
Cleat
CRN001



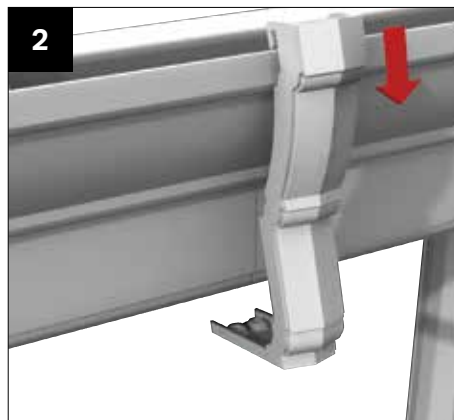
Fixing Screw
CRN007 (2 per jointer)



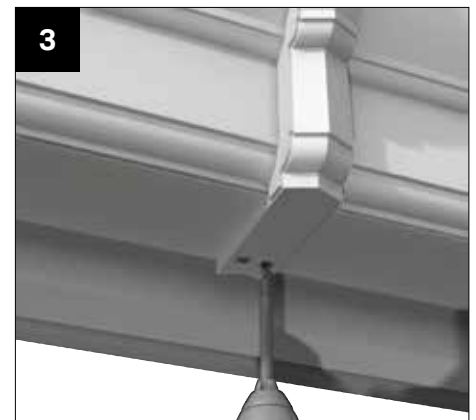
Please note that it is not compulsory to fit the jointers provided. If due care has been taken with the installation of the gutter cover. If on the other hand the 'look' of the cast jointer is preferred follow the instructions above for each relevant jointer. Some companies MAY have ordered a 'dummy' joint at 'mid-run', if so just follow steps 2 + 3. The die cast straight jointer can also be configured on site to be used at host wall position.



Attach the cleat CRN001 using 2 x CRN006 provided, on each side of the joint. Repeat for each of the 'layers'.



Offer up the CRN180 straight jointer, hook over the front lip of the gutter cover.



Whilst ensuring that the inline bracket remains located in position, screw fix using self drilling screws CRN007.

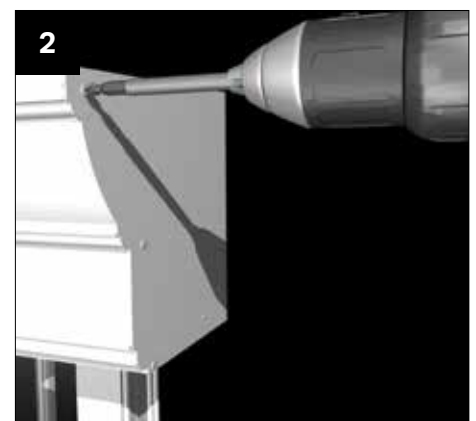
GUTTER COVER INSTALLATION - ADDITIONAL DETAILS



GUTTER RETURN DETAIL - If the gutter returns along the host wall (shown above) complete steps 1A and 1B after step 4 of the general installation. Ensure the treated timber baton (49mm x 20mm) is level, then fix into position.

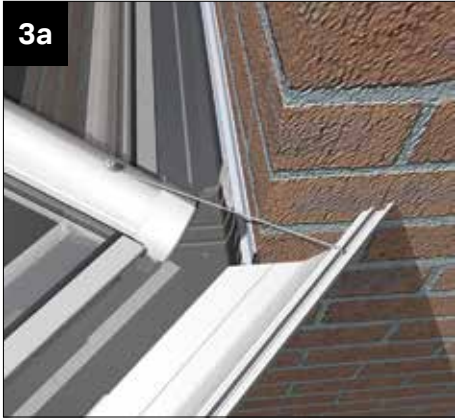


Secure lower section using fixings provided (CRN007)

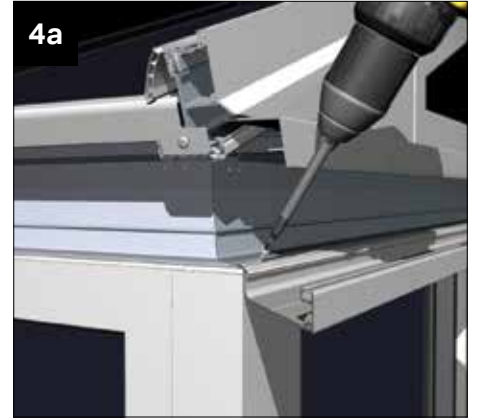


GUTTER STOP END DETAIL - Used with lean-to roofs, gable roofs or when the gutter returns along the host wall. Secure the end plate into position using the fixings provided (CRN008).

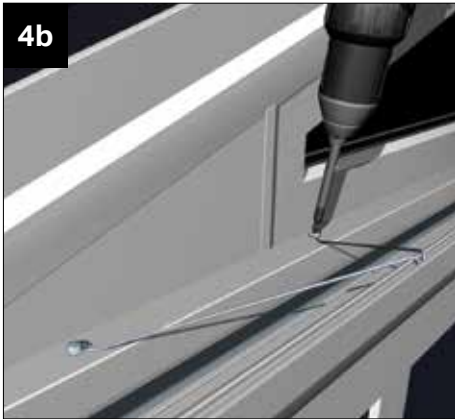
DECORATIVE FASCIA INSTALLATION - ADDITIONAL DETAILS



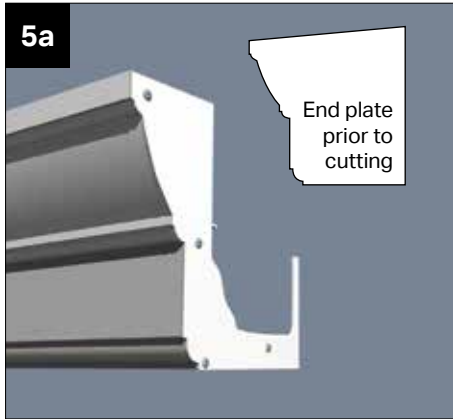
3a
GUTTER COVER & VICTORIAN BOXGUTTER DETAIL - For situations other than that shown, gutter cover should be prepped by you on site to suit the wall condition you find.



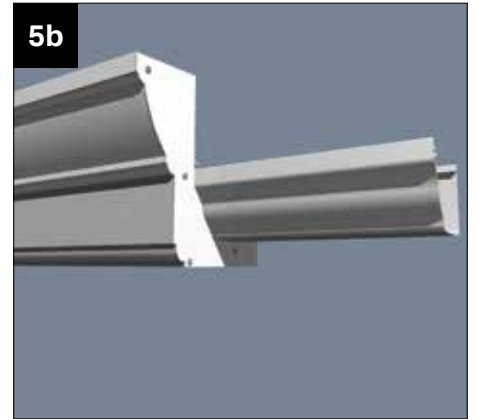
4a
GUTTER COVER & GABLE EAVES BEAM DETAIL - Used on lean-to styles with raked frames or duo-pitch gables that use the gable support beam. Fix lower section as shown - continue with the remainder



4b
 Fix wire ties at an angle as shown, ensure the gutter cover is parallel to the frames/roof line.



5a
GUTTER COVER & FLY THROUGH GUTTER DETAIL - Used when the gutter extends beyond the gutter cover. Take the end plate (CRN003) and cut to the shape of the gutter that projects beyond the gutter cover.



5b
 Typical finished detail.

GUTTER COVER INSTALLATION - INLINE OUTLET COVER

IT IS IMPORTANT TO CONSIDER THE OUTLET POSITION PRIOR TO FITTING THE GUTTER COVER. WHEN THE OUTLET POSITION HAS BEEN DECIDED NOTCH THE GUTTER COVER LOWER PROFILE AS SHOWN

